

**Use this User's Guide to Install**

# **Wireless-G PCI Adapter**

# Table of Contents

## **1. Introduction**

- 1.1 The Wireless-G PCI Adapter
- 1.2 Key Feature

## **2. Planning Your Wireless Network**

- 2.1 Network Topology
- 2.2 Ad-Hoc versus Infrastructure Mode

## **3. Getting to Know the Wireless-G PCI Adapter**

## **4. Installing Driver, Configuration Utility and Hardware for Windows 98SE/ME/2000/XP**

- 4.1 Driver Installation for Windows 98SE/ME/2000/XP
- 4.2 Insert the Adapter

## **5. Using the Configuration Utility for Windows 98SE/ME/2000/XP**

- 5.1 Overview
- 5.2 Access the Configuration Utility
- 5.3 Profile
- 5.4 Create a New Profile
- 5.5 Link Status
- 5.6 Site Survey
- 5.7 Statistics
- 5.8 Advance
- 5.9 About

## **6. Troubleshooting**

# 1. Introduction

## 1.1 The Wireless-G PCI Adapter

The Wireless-G PCI Adapter installs in most desktops and lets you put your computer almost anywhere in the building, without the cost and hassle of running network cables. Now you don't have to drill holes in your walls and climb through the attic or cellar to get connected to the network. Once you're connected, you can keep in touch with your e-mail, access the Internet, use instant messaging to chat with friends, and share files and other resources such as printers and network storage with other computers on the network.

The Wireless-G PCI Adapter connects you with Wireless-G networks at an incredible 54Mbps! And for added versatility, it can also interoperate with all the 11Mbps Wireless-B (802.11b) products found in homes, businesses, and public wireless hotspots around the country. And in either mode, your wireless communications are protected by up to 128-bit encryption, so your data stays secure.

So don't hassle with running cables through your house - get your desktop connected the easy way with the Wireless-G PCI Adapter.

## 1.2 Key Feature

Investment Protection: 5 Times Faster and Interoperate with Existing Wireless-B Equipment Seamlessly  
64/128-bit WEP and Advanced 256-bit WPA (Wi-Fi Protected Access) Encryption Provides Maximum Wireless Security  
Ease of Use: Simple Installation with the Help of the Simple Setup Wizard  
Compatible with Windows 98SE/ME/2000/XP

# 2. Planning Your Wireless Network

## 2.1 Network Topology

A wireless local area network (WLAN) is exactly like a regular local area network (LAN), except that each computer in the WLAN uses a wireless device to connect to the network. Computers in a WLAN share the same frequency channel and SSID, which is an identification name for wireless devices.

## 2.2 Ad-Hoc versus Infrastructure Mode

An Ad-Hoc wireless LAN is a group of computers, each equipped with one WLAN adapter, connected as an independent wireless LAN. Computers in a specific Ad-Hoc wireless LAN must be configured to share the same radio channel.



The adapter provides access to a wired LAN for wireless workstations. An integrated wireless and

wired LAN is called an infrastructure configuration. A group of adapter PC users and an Access Point and compose a Basic Service Set (BSS). Each adapter PC in a BSS can talk to any computer in the wired LAN infrastructure via the Access Point.



## 3. Getting to Know the Wireless-G PCI Adapter

Wireless-G PCI Adapter will be installed into your PC like any other PCI adapter and on the mounting bracket, you will find two distinguishing items:

**ACT LED Green.** The ACT LED will light up when the Adapter is powered on.

**Antenna Port** Attach the PCI Adapter's antenna here and position it for maximum performance, which is usually perpendicular to the horizon.

## 4. Installing Driver, Configuration Utility and Hardware for Windows 98SE/ME/2000/XP

### 4.1 Driver Installation for Windows 98SE/ME/2000/XP

#### 4.1.1 Running the Auto Driver/Utility Installation

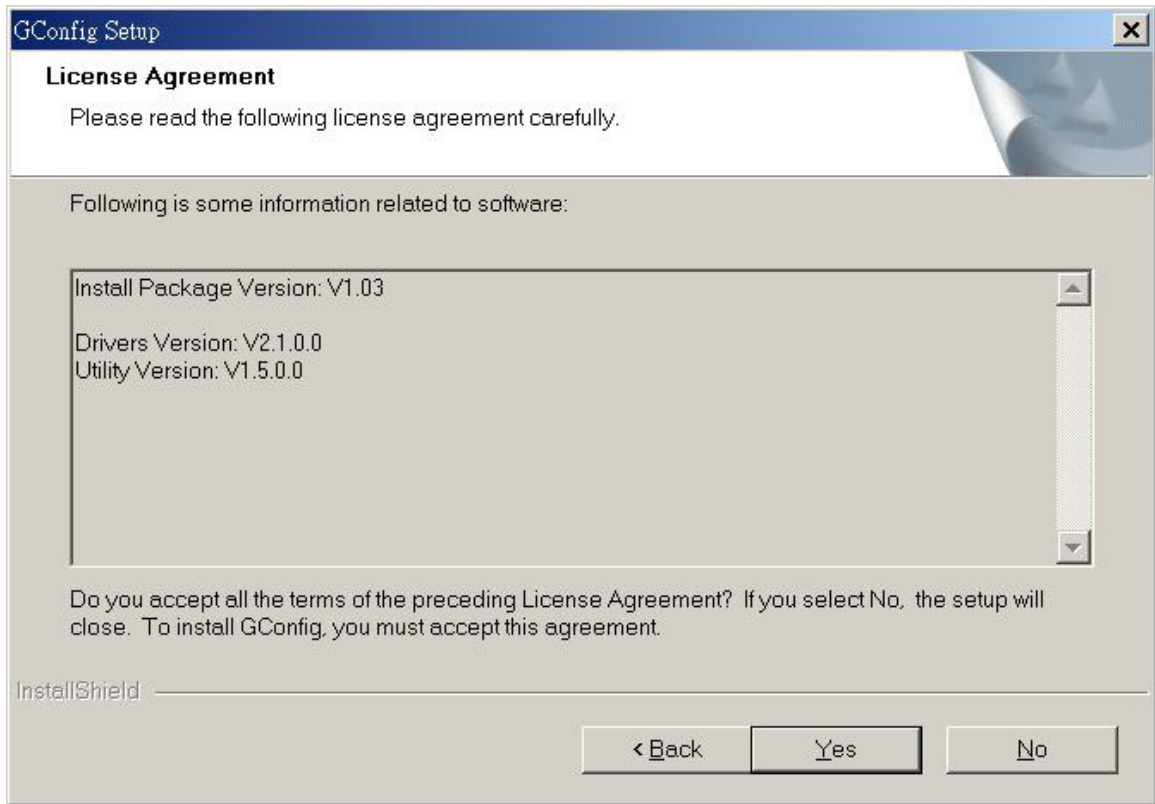
Before installing your Wireless-G PCI Adapter, insert the Auto-Install CD into your CD-ROM driver. Unless you have deactivated the auto-run feature of Windows, the screen shown in Fig 4-1 should appear automatically. If this screen doesn't appear automatically, you can access the installation by clicking the **Start** button and choosing **Run**.

In the drop-down box provided type **D:\Setup.exe** (where D: is the letter of your CD-ROM driver). Alternately, double-click **My Computer** and double-click the **Setup.exe** icon in the folder that appears.



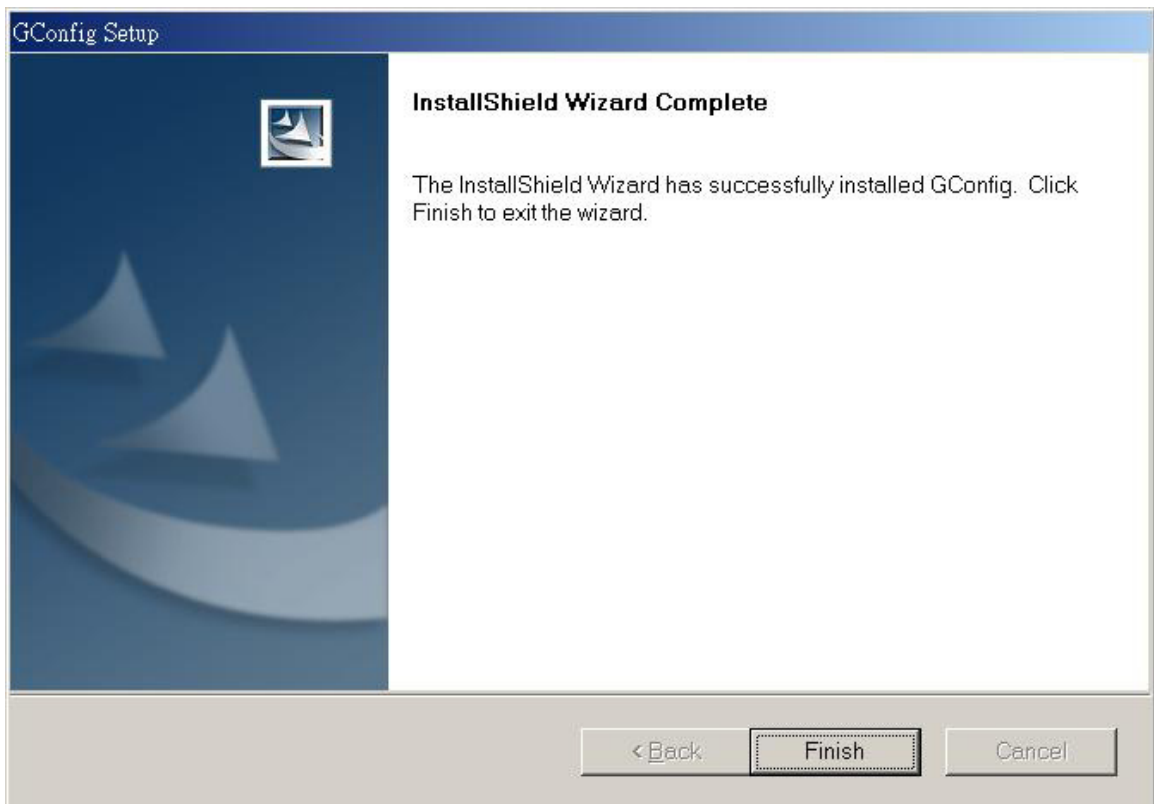
Fig 4-1 Auto-run Feature of Windows

- 4.1.2 Click **Install Wireless-G PCI Adapter Driver and Utility** to install driver/utility for your Wireless-G PCI Adapter. Click **Yes >**. ( Fig 4-2)



**Fig 4-2 Gconfig Setup-Welcome**

4.1.3 In the page, click **Finish >**. ( Fig 4-3) to complete the installation.



**Fig 4-3 Gconfig Finish**

## 4.2 Insert the Wireless-G PCI adapter

4.2.1 To insert the Wireless-G PCI Adapter into a desktop computer, do the following:

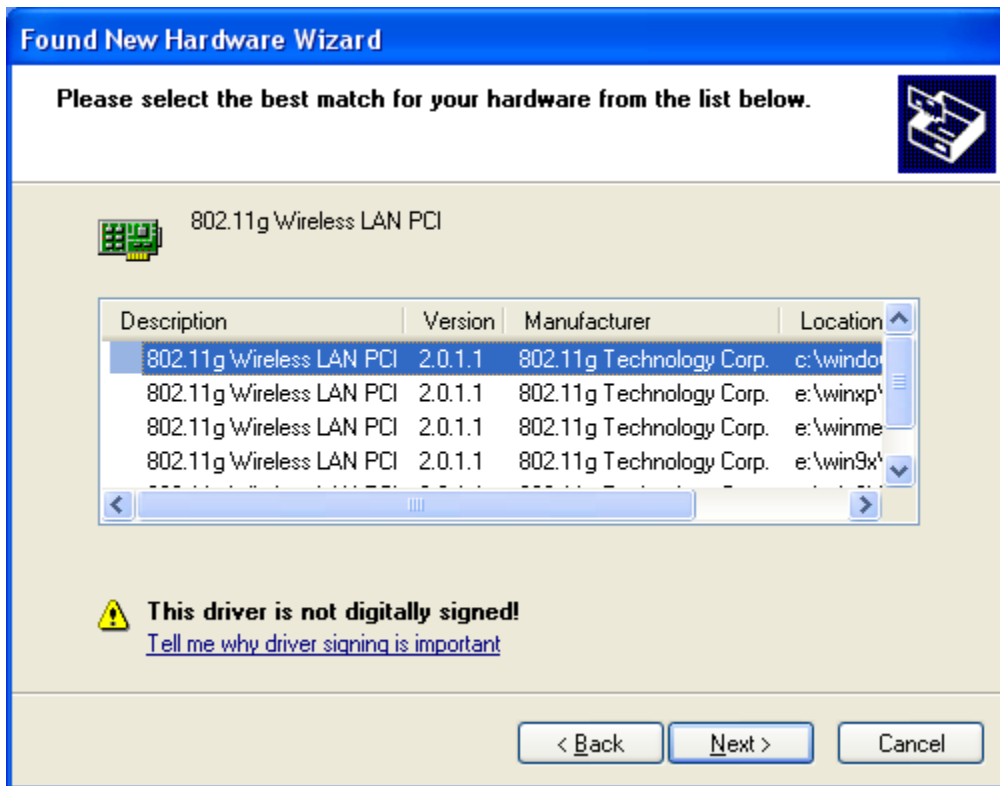
- ◆ Turn off your desktop PC.
- ◆ Open your PC case and locate an available PCI slot on the motherboard. Check with your computer manufacturer for instructions.
- ◆ Slide the PCI Adapter into the PCI slot. Make sure that all of its pins are touching the slot's contacts. You may have to apply a bit of pressure to slide the adapter all the way in. After the adapter is firmly in place, secure its fastening tab to your PC's chassis with a mounting screw. Then, close your PC.
- ◆ Attach the external antenna to the adapter's antenna port.
- ◆ Power on your desktop PC.

4.2.2 Windows will automatically detect the Adapter. Please select **Install the software automatically** then click **Next>** (Fig 4-5).



Fig 4-5 Welcome to Found New Hardware Wizard

4.2.3 Choose the best match for your hardware in the next screen. And then click **Next>** (Fig 4-6).



**Fig 4-6 Found New Hardware Wizard-Select Best Match**

4.2.4 The screen in Windows XP (Fig 4-7) will appear. Click **Continue Anyway**. Then you will see Windows is installing the software(Fig 4-8). Then Select the Country Region(Fig4-9).



Fig 4-7 Windows XP Screen

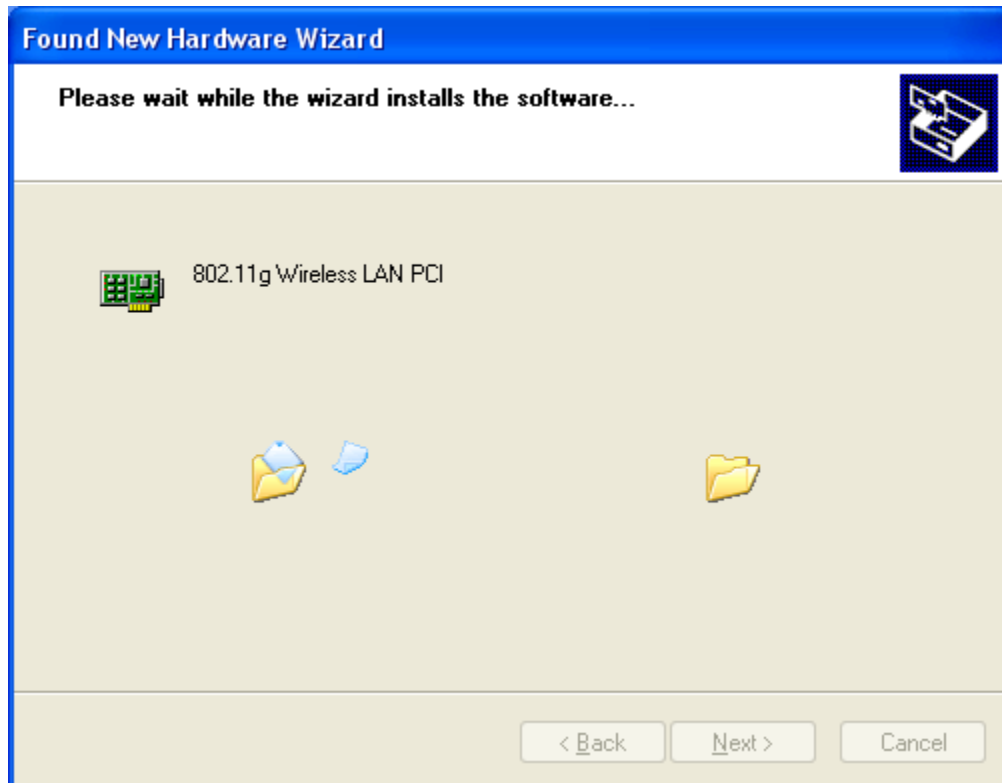
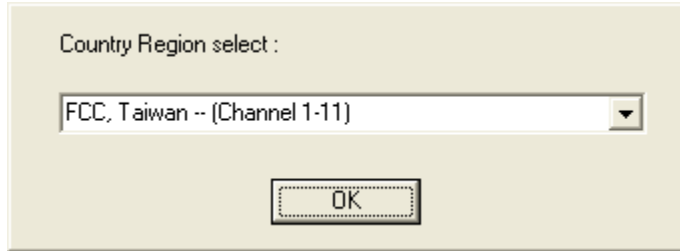
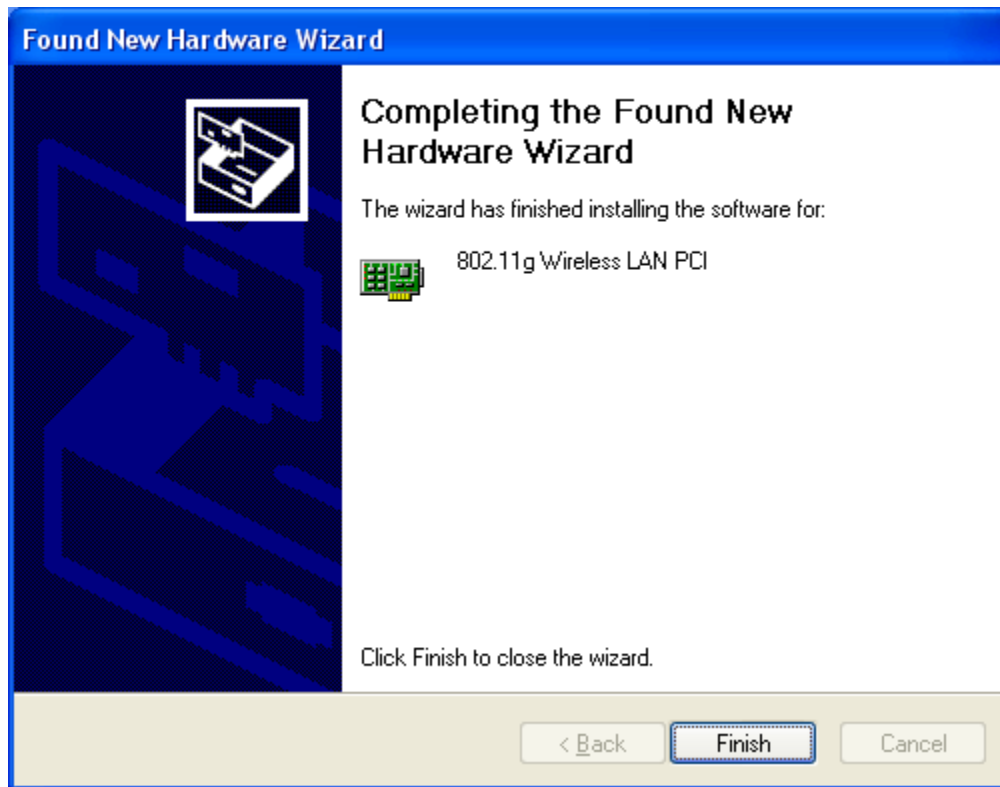


Fig 4-8 Install the Software



**Fig 4-9 Select Country Region**

4.2.5 The Windows has finished installing software for the device. Click **Finish** to finish the installation (Fig 4-10). For Windows 98SE/ME, System will want to restart. For details of configuration utility, please see **Chapter 5**.



**Fig 4-10 Complete the Found New Hardware**

## 5. Using the Configuration Utility for 98SE/ME/2000/XP

### 5.1 Overview

Use the Configuration Utility to check the link information, search for available wireless networks, or create profiles that hold different configuration settings.

## 5.2 Access the Configuration Utility

After installing the Adapter, the Configuration Utility icon will appear in your system tray. Double-click the icon. (Fig 5-1)



Fig 5-1

The utility is divided into six parts: **Profile**, **Link Status**, **Site Survey**, **Statistics**, **Advance**, and **About**. You should change all your configuration settings for your Wireless-G PCI Adapter by using this utility and not with the Network Properties section in your Control Panel.

## 5.3 Profile

The Profile screen (Fig 5-2) lets you save different configuration profiles for different network setups.

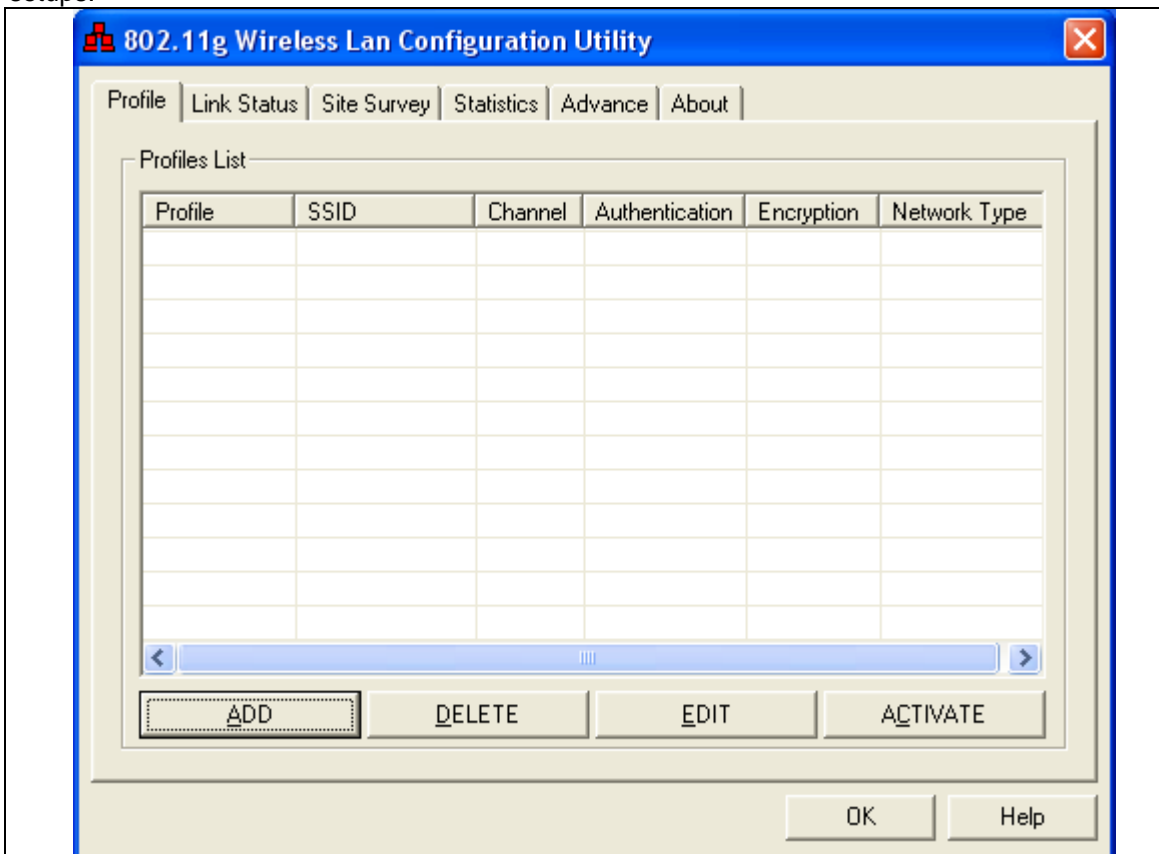


Fig 5-2 Profile

**Add**- Click the Add button to create a new profile, See the next section, “Create a New Profile”.

**Delete** - Click the Delete button to delete a profile.

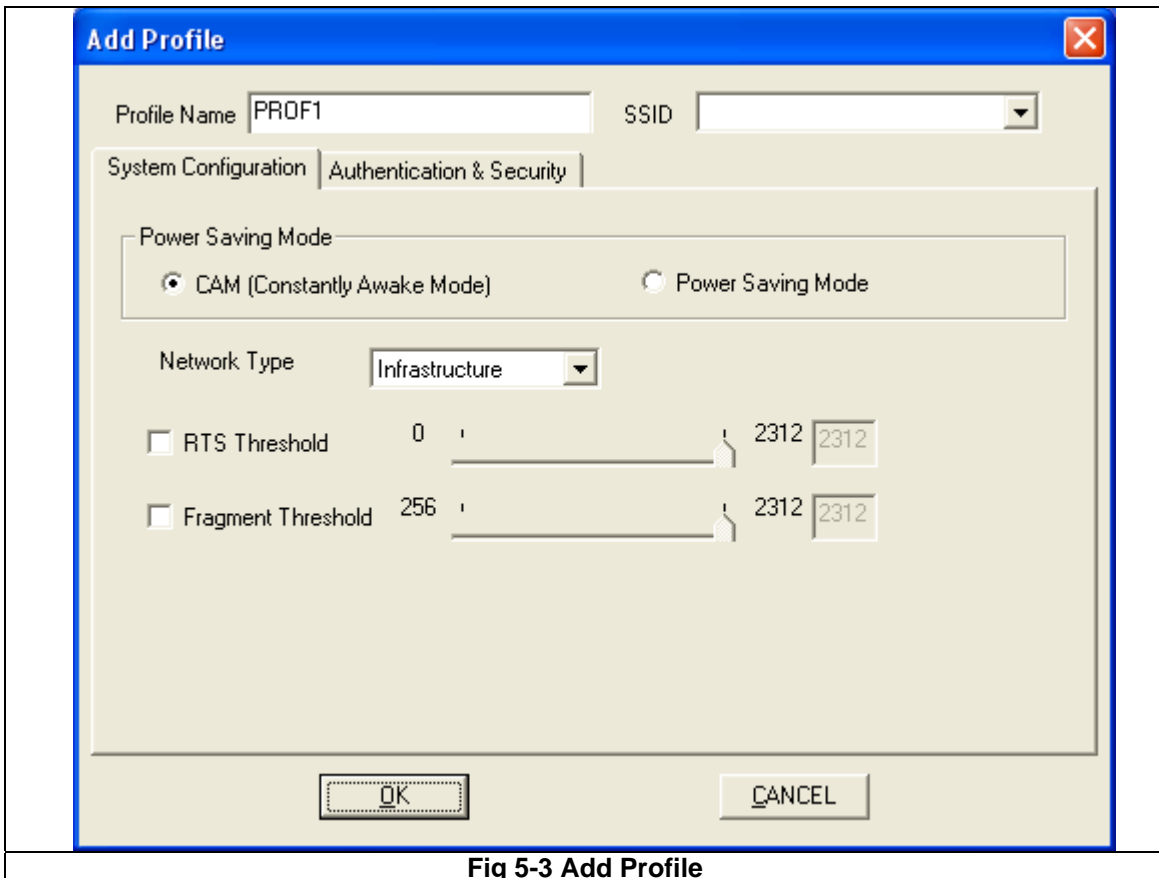
**Edit**- Select a profile, and click the Edit button to change an existing profile.

**Activate**- To activate to a wireless network in a specific profile, select the profile, and click the Activate button.

Click the **X** (Close) button in the upper right corner to exit the WLAN Monitor.

## 5.4 Create a New Profile

5.4.1 On the Profile screen, as shown in Figure 5-2, click the **Add** button to create a new profile. When the **Add Profile** screen appears (Figure 7-9), enter a name for the new profile. Click **OK** to save the profile name or click **Cancel** to return to the previous screen.



**Fig 5-3 Add Profile**

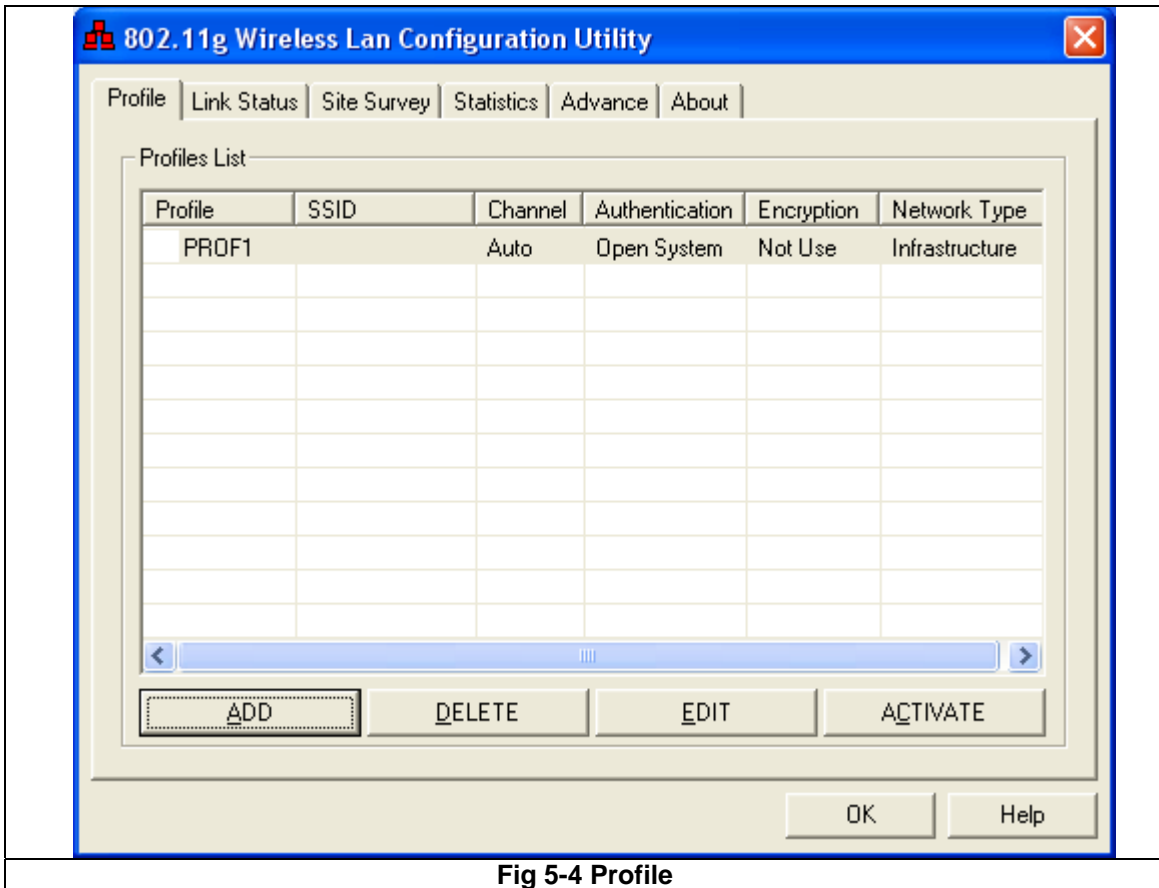
5.4.2 Fill the following information.

**SSID:** Fill the SSID or unique of the wireless network

**Network Type:** There are two wireless modes.

**(A) Access Point** - This mode allows wireless and wired networks to communicate through an access point.

**(B) Peer to Peer** - This mode allows wireless-equipped computers to communicate directly with each other. No access point is used.



**Fig 5-4 Profile**

5.4.3 The Profile screen (Figure 5-4) will appear, and then fill in the information:

**Profile** - Name of the connection profile.

**SSID** - The wireless network's unique name, as in the connection profile.

**Channel** - The channel to which the wireless network devices are set.

**Authentication** - IEEE 802.11 provides two different authentications: **Open System** and **Shared Key**. Select what authentication you need.

**Encryption** - The status of the encryption security feature.

**Network Type** - The mode of the wireless network currently in use.

## 5.5 Link Status

5.5.1 The Link Status screen (Shown in Fig 5-5) provides information about the current link between the Wireless-G PCI Adapter and the nearby wireless Access Point.

5.5.2 When in Infrastructure Mode, **Status** will display the connection statistics for the network segment that you are on.

5.5.3 The **Current Channel** field shows the channel to which the wireless network devices are currently set.

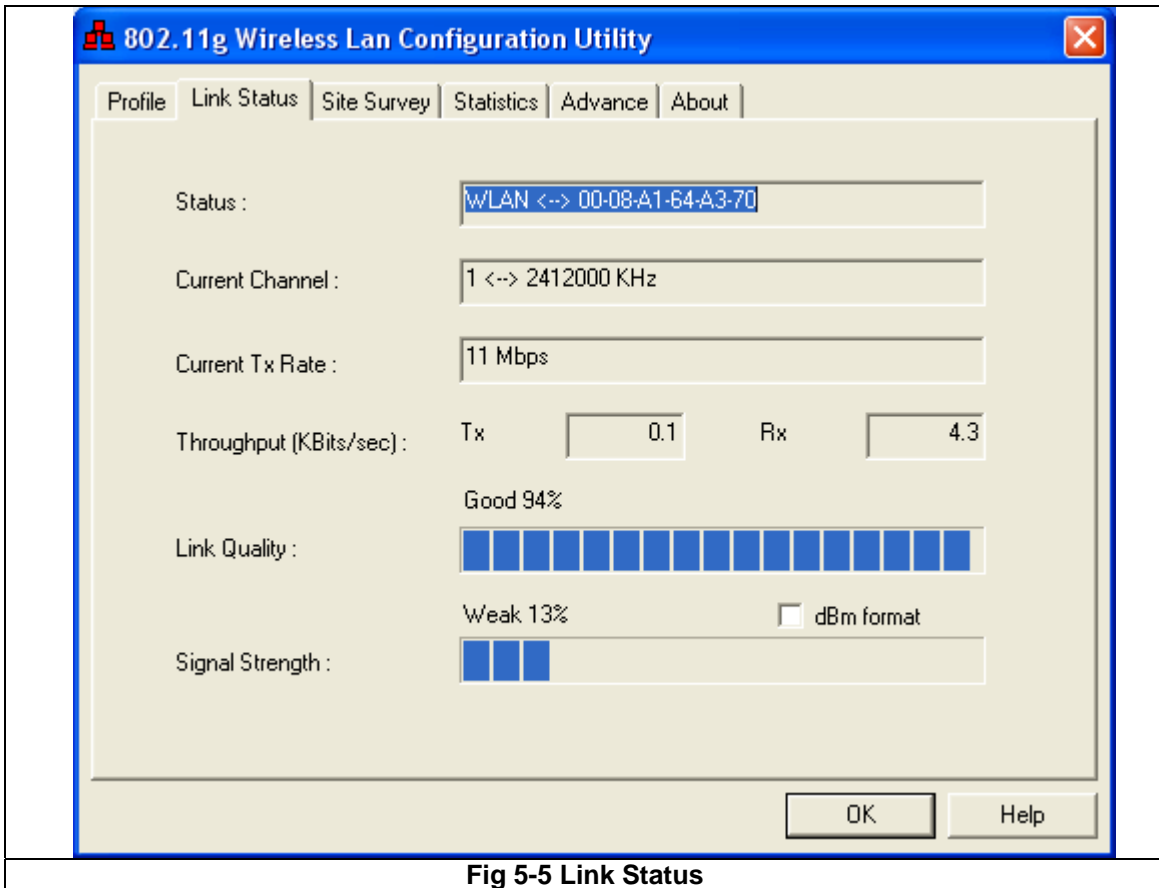
5.5.4 The **Current Tx Rate** field shows the transfer rate in megabits per second.

5.5.5 The **Throughput (KBit/sec)** field is the amount of data moved successfully from one place

to another in a given time period.

5.5.6 The **Link Quality** field will display a bar indicating the percentage, between 0 and 100 percent, of the quality of the link. The higher the percentage, the better the link.

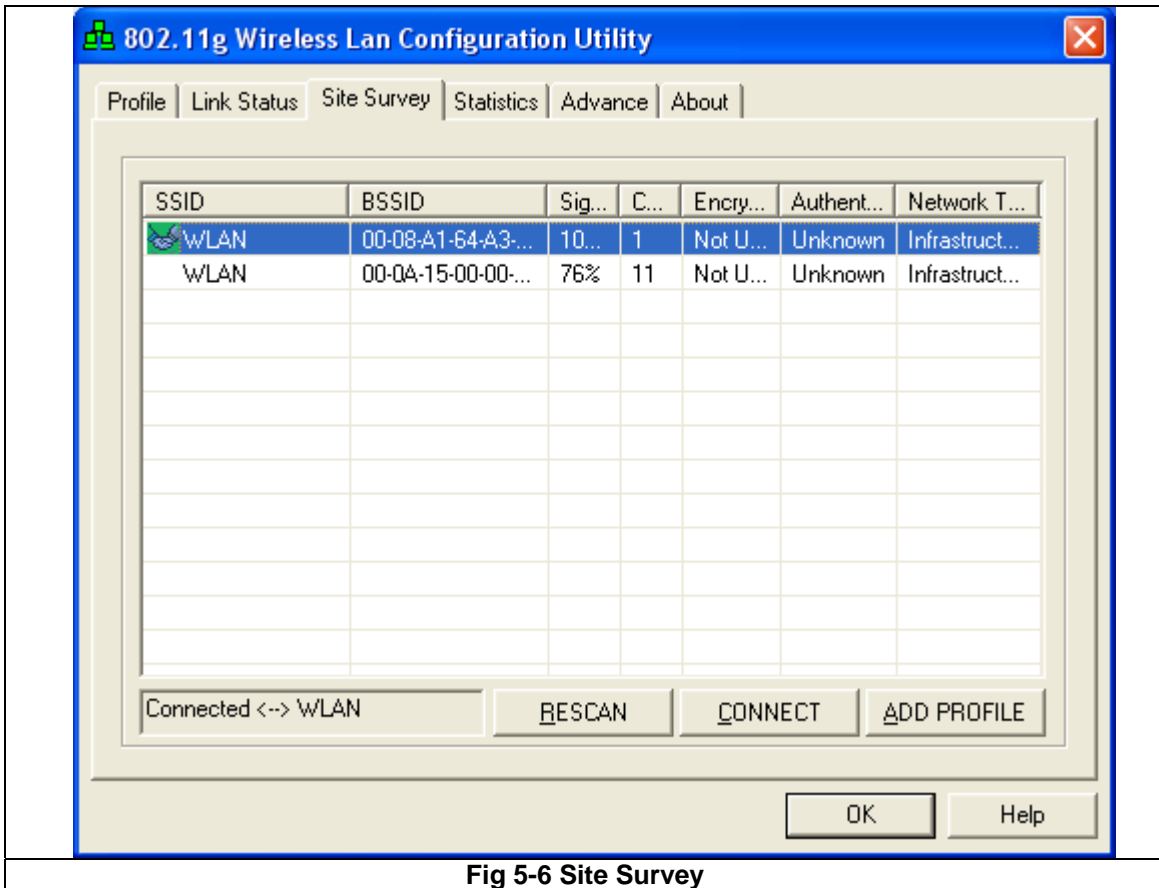
5.5.7 The **Signal Strength** field will display a bar indicating the percentage, between 0 and 100 percent, of the strength of the signal. The higher the percentage, the stronger the signal.



**Fig 5-5 Link Status**

## 5.6 Site Survey

The Available Networks displays a list of infrastructure and ad-hoc networks available for connection. ( Fig 5-6)



**Fig 5-6 Site Survey**

**Information:**

**SSID** - The SSID or unique of the wireless network.

**BSSID** - The band of the wireless site.

**Signal** - The Signal Strength bar indicates signal strength.

**Channel** - The channel to which the wireless network devices are set.

**Encryption** - The status of the encryption security feature, **64 bits** or **128 bits**, or **Not Use**.

**Authentication** - The type of authentication mode that is currently chosen, **Open System** or **Shared Key**.

**Network Type** - The mode of the wireless network currently in use.

**Rescan** - Click the **Rescan** button to perform a new search for wireless devices.

**Connect** - To connect to one of the networks on the list, select the wireless network, and click the **Connect** button. If the wireless network has encryption enabled, you can't connect. If you want to connect, you must add a profile in profile Tab.

**Add Profile** – If you click this button, the Profile screen (Figure 5-4) will appear.

## 5.7 Statistics

The Statistics screen (Shown in Fig 5-7) provides information about the Transmit Statistics and Receive Statistics. You can reset counters if you need, otherwise click **OK**.

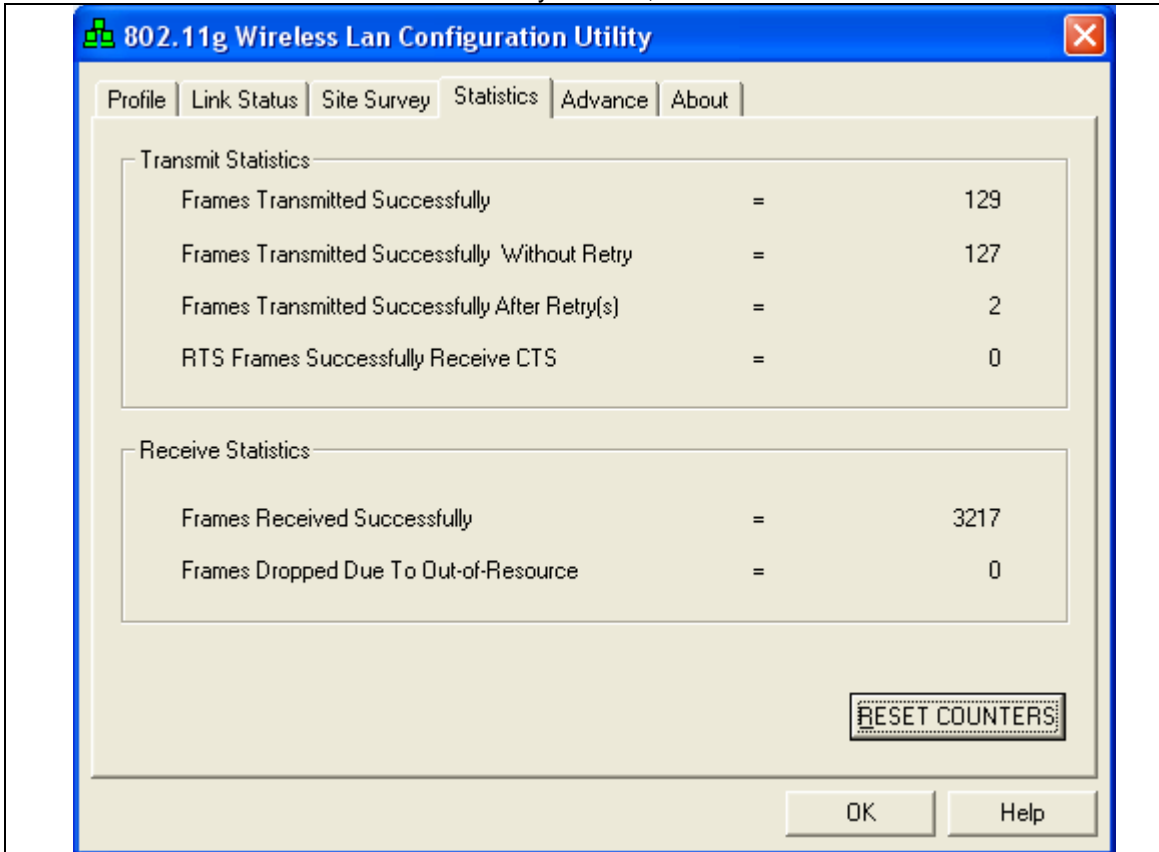


Fig 5-7 Statistics

## 5.8 Advance

The Advanced screen (Fig 5-8) allows you to set Wireless Mode, TX Antenna Diversity, RX Antenna Diversity, 11B/G Protection, and TX Rate.

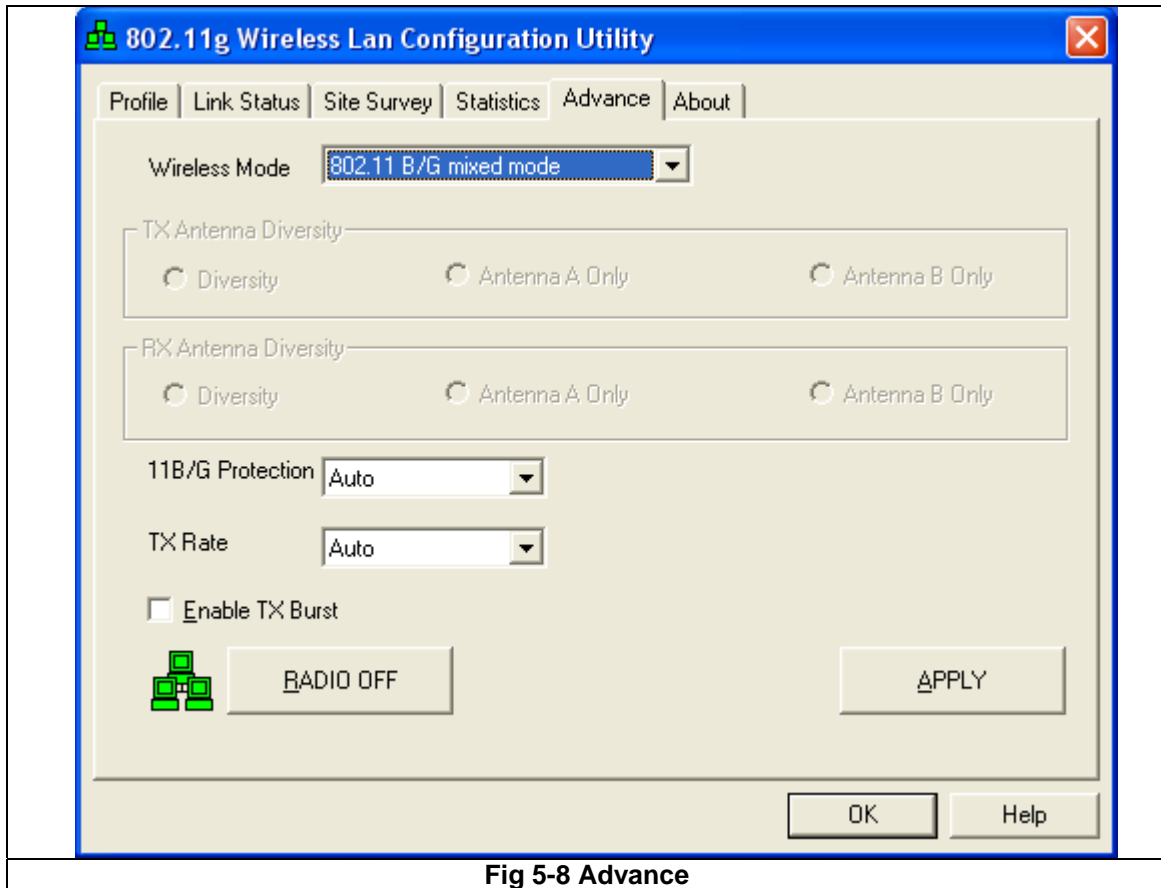
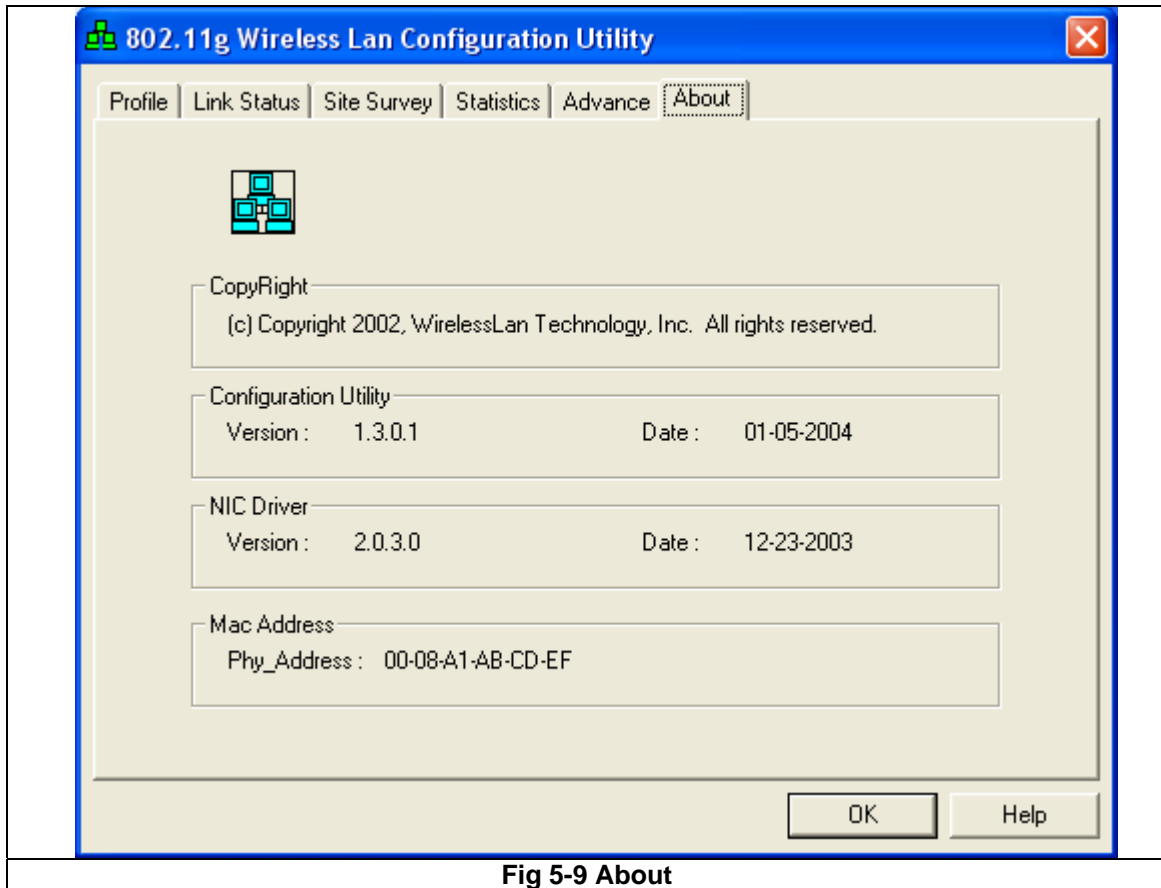


Fig 5-8 Advance

## 5.9 About

The About screen shows the release information for the Utility Version, Driver Version, and MAC Address.



**Fig 5-9 About**

## 6. Troubleshooting

This chapter provides solutions to problems that may occur during the installation and operation of the Wireless-G CardBus PC Card. Read the descriptions below to solve your problems.

1. The Wireless-G CardBus PC Card does not work properly.

- Reinsert the Wireless-G CardBus PC Card into your PC's PCI slot.
- Right click on **My Computer** and select **Properties**. Select the device manager and click on the Network Adapter. You will find the Wireless-G CardBus PC Card if it is installed successfully. If you see the yellow exclamation mark, the resources are conflicting. You will see the status of the Wireless-G CardBus PC Card. If there is a yellow question mark, please check the following:
  - Make sure that your PC has a free IRQ (Interrupt ReQuest, a hardware interrupt on a PC.)
  - Make sure that you have inserted the right adapter and installed the proper driver.

If the Wireless-G CardBus PC Card does not function after attempting the above steps, remove the adapter and do the following:

- Uninstall the driver software from your PC.
- Restart your PC and repeat the hardware and software installation as specified in this User Guide.

2. I cannot communicate with the other computers linked via Ethernet in the Infrastructure configuration.

- Make sure that the PC to which the Wireless-G CardBus PC Card is associated is powered on.
- Make sure that your Wireless-G CardBus PC Card is configured on the same channel and with the same security options as with the other computers in the Infrastructure configuration.